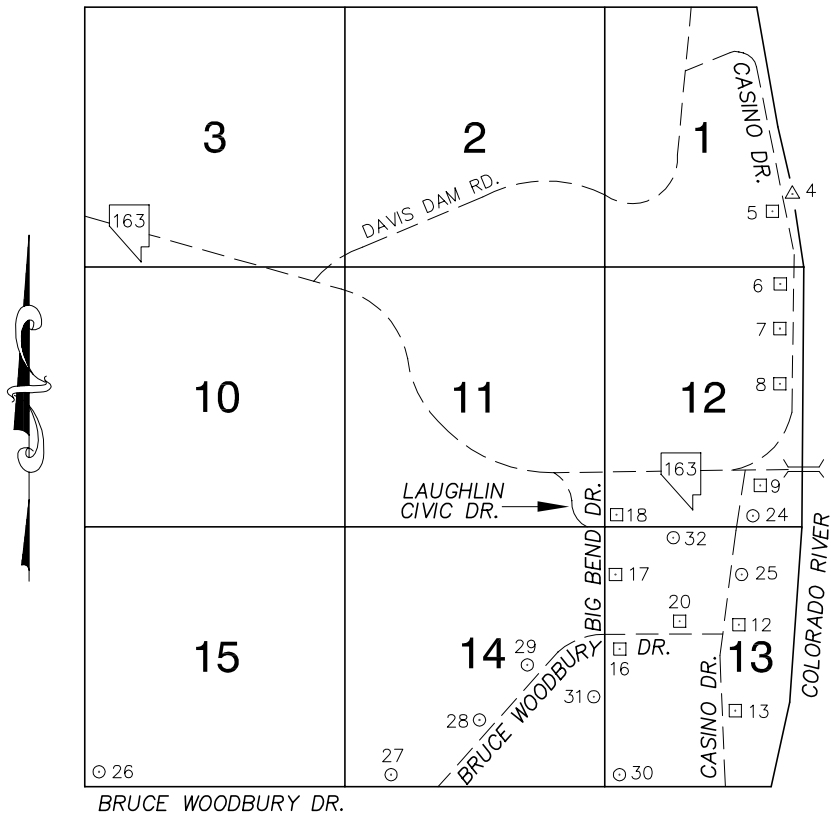


Township 32 South, Range 66 East Northeast Quarter



IN 1992, ELEVATIONS IN THE LAUGHLIN AREA WERE ADJUSTED TO NAVD 1988 FROM NGVD 1929 UTILIZING THE NATIONAL GEODETIC SURVEY'S VERTCON TRANSFORMATION PROGRAM VERSION 1.0. THIS PROGRAM HAS AN ESTIMATED ROOT MEAN SQUARE ERROR OF +/- 1 CM, AND A MAXIMUM ESTIMATED ERROR OF +/- 2.5 CM. THIS 2003 BENCHBOOK INCORPORATES THIS METHODOLOGY.

- ALL ELEVATIONS ARE IN METERS -

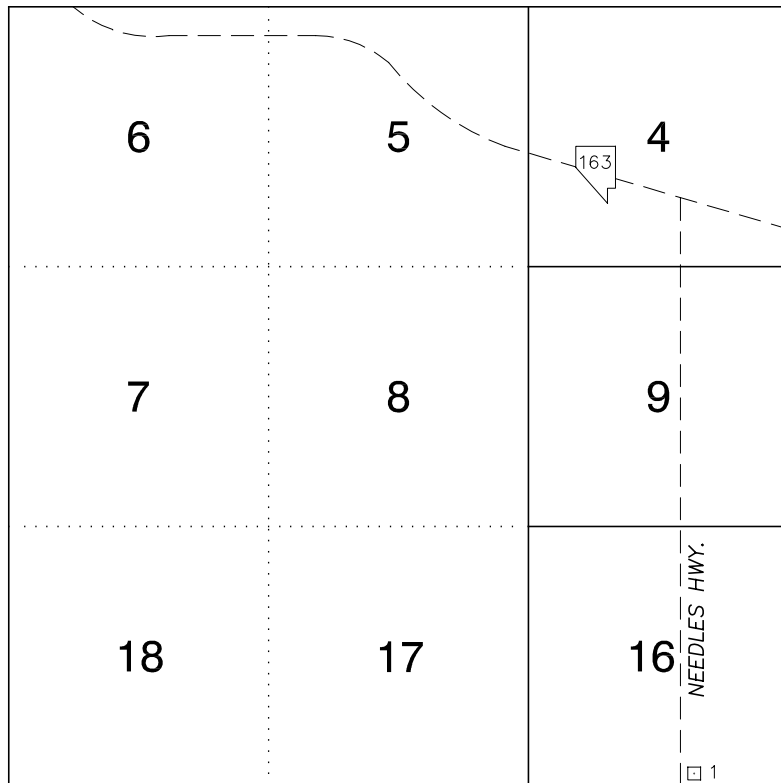
No.	STATION	ELEVATION (METERS)	DESCRIPTION
1			LOST 2003
2			LOST 2003
3			LOST 2003
4	USGS	160.218	F N D 3 3/4" BRASS CAP, GEOLOGICAL SURVEY B.M. LOCATED IN THE SOUTH PORTION OF A CONCRETE SUPPORT FOR THE CATWALK TO THE GAUGING STATION. STAMPED: ELEV. ABOVE SEA DATUM FEET
5	OC26 1SE6	161.915	F N D RIVET AND SQUARE ALUMINUM PLATE, IN TOP OF HEADWALL WEST SIDE OF CASINO DR, 0.93 MILES NORTH OF THE BRIDGE.
6	OC26 12NNE6	161.439	F N D RIVET AND SQUARE ALUMINUM PLATE, IN TOP OF HEADWALL WEST SIDE OF CASINO DR., 0.74 MILES NORTH OF THE BRIDGE.
7	OC26 12NE6	161.635	F N D RIVET AND SQUARE ALUMINUM PLATE IN TOP OF HEADWALL WEST SIDE OF CASINO DR., 0.40 MILES NORTH OF THE BRIDGE.
8	OC26 12E6	161.877	F N D RIVET AND SQUARE ALUMINUM PLATE IN TOP OF HEADWALL WEST SIDE OF CASINO DR., 0.17 MILES NORTH OF THE BRIDGE.
9	2C26 12SE6	161.811	F N D RIVET AND SQUARE ALUMINUM PLATE IN TOP OF CURB, SOUTHEAST CORNER CASINO DR., AND THE BRIDGE NEAR THE PC OF CASINO DR.

CLARK COUNTY VERTICAL CONTROL v.2003

CLARK COUNTY SURVEYOR'S OFFICE 5051 SOUTH PARADISE ROAD LAS VEGAS, NEVADA 89119 (702) 455-0640	CONVERSION FACTOR: METERS X $\left(\frac{3937}{1200}\right)$ = U.S. SURVEY FEET		
	REVISED 2003	SHEET 1 OF 2	32-66 NE

No.	STATION	ELEVATION (METERS)	DESCRIPTION	No.	STATION	ELEVATION (METERS)	DESCRIPTION
10			LOST 2003	23			LOST 2003
11			LOST 2003	24	0C26 12SSE6 2000	160.413	SE T RIVET AND ROUND ALUMINUM PLATE IN TOP OF CURB, NORTHEAST CORNER CASINO DR. AND LAUGHLIN CIVIC DR. 30' NORTH OF CASINO DR.
12	2C26 13E6	162.646	FN D RIVET AND SQUARE ALUMINUM PLATE IN TOP OF CURB, NORTHEAST CORNER OF CASINO DR. AND BRUCE WOODBURY DR. NEAR THE PC OF CASINO DR.	25	0C26 13NE6 2000	161.541	SE T RIVET AND ROUND ALUMINUM PLATE IN TOP OF CURB, NORTHEAST CORNER OF CASINO DR. AND THE ENTRANCE TO THE FLAMINGO HILTON NEAR THE PC OF CASINO DR.
13	2C26 13SSE6	161.102	FN D RIVET AND SQUARE ALUMINUM PLATE IN TOP OF CURB, NORTHEAST CORNER OF CASINO DR. AND THE SOUTH ENTRANCE TO THE COLORADO BELLE NEAR THE PC OF CASINO DR.	26	0C26 15SWS 2000	272.554	SE T RIVET AND ROUND ALUMINUM PLATE IN A CONCRETE MONUMENT, SOUTH OF BRUCE WOODBURY DR. AT A FENCE 0.52 MILES EAST OF NEEDLES HWY.
14			LOST 1992	27	0C26 14SSW6 2000	202.932	SE T RIVET AND ROUND ALUMINUM PLATE IN A CONCRETE HEADWALL, AT THE SOUTHWEST CORNER OF BRUCE WOODBURY DR. AND THE EAST ENTRANCE OF THE MOHAVE GENERATING STATION.
15			LOST 2003	28	0C26 14SE6 2000	190.895	SE T RIVET AND ROUND ALUMINUM PLATE IN A CONCRETE ELEC. PAD. # (FC4310) IN FRONT OF THE CLARK COUNTY SANITATION DISTRICT AT 2255 BRUCE WOODBURY DR.
16	2C26 13W4	175.558	FN D RIVET AND SQUARE ALUMINUM PLATE IN TOP OF WEST CONCRETE EDGE OF GAS VAULT, SOUTHEAST CORNER OF BIG BEND DR AND BRUCE WOODBURY DR.	29	0C26 14E6 2000	185.335	SE T RIVET AND ROUND ALUMINUM PLATE IN A CONCRETE ELECTRICAL PAD. # (6868) WEST SIDE OF BRUCE WOODBURY DR. 0.29 MILES SOUTHWEST OF BIG BEND DR.
17	2C26 13NWW6	184.509	FN D RIVET AND SQUARE ALUMINUM PLATE IN TOP OF WEST CONCRETE EDGE OF ELECTRICAL VAULT, EAST SIDE OF BIG BEND DR. 0.23 MILES SO. OF LAUGHLIN CIVIC DR.	30	0C26 13SWS 2000	198.229	SE T RIVET AND ROUND ALUMINUM PLATE IN A CONCRETE MONUMENT, WEST SIDE OF BIG BEND DR. 0.56 MILES NORTH OF CASINO DR.
18	2C26 12SWS	183.956	FN D RIVET AND SQUARE ALUMINUM PLATE IN TOP OF CURB, NORTHEAST CORNER OF BIG BEND DR. AND THE CUTOFF ROAD, NEAR THE PC OF THE CUTOFF ROAD.	31	0C26 14SEE6 2000	175.281	SE T RIVET AND ROUND ALUMINUM PLATE IN TOP OF CURB, WEST SIDE OF BIG BEND DR. 900' SOUTH OF BRUCE WOODBURY DR. NEAR A POWER STATION WALL.
19			LOST 1992	32	0C26 13NNW6 2000	177.840	SE T RIVET AND ROUND ALUMINUM PLATE IN TOP OF CURB, SOUTH SIDE OF LAUGHLIN CIVIC DR. 0.25 MILES EAST OF BIG BEND DR.
20	2C26 13W6	169.986	FN D RIVET AND SQUARE ALUMINUM PLATE IN TOP OF CURB, NORTH SIDE OF BRUCE WOODBURY DR., NEAR THE EAST FENCELINE OF THE LAUGHLIN MEDICAL CENTER.	33			
21			LOST 2003	CLARK COUNTY VERTICAL CONTROL v.2003			
22			LOST 2003	CLARK COUNTY SURVEYOR'S OFFICE 5051 SOUTH PARADISE ROAD LAS VEGAS, NEVADA 89119 (702) 455-0640		CONVERSION FACTOR: METERS X $\left(\frac{3937}{1200}\right)$ = U.S. SURVEY FEET	
				REVISED 2003		SHEET 2 OF 2	32-66 NE

Township 32 South, Range 66 East Northwest Quarter



BRUCE WOODBURY DR.

IN 1992, ELEVATIONS IN THE LAUGHLIN AREA WERE ADJUSTED TO NAVD 1988 FROM NGVD 1929 UTILIZING THE NATIONAL GEODETIC SURVEY'S VERTCON TRANSFORMATION PROGRAM VERSION 1.0. THIS PROGRAM HAS AN ESTIMATED ROOT MEAN SQUARE ERROR OF +/- 1 CM, AND A MAXIMUM ESTIMATED ERROR OF +/- 2.5 CM. THIS 2003 BENCHBOOK INCORPORATES THIS METHODOLOGY.

- ALL ELEVATIONS ARE IN METERS -

No.	STATION	ELEVATION (METERS)	F N D	DESCRIPTION
1	2C26 16S4	299.743	F N D	RIVET AND SQUARE ALUMINUM PLATE IN SOUTHWEST CORNER OF A CONCRETE ELECTRICAL TRANSFORMER PAD #FC580, NORTHEAST CORNER OF THE NEEDLES HIGHWAY AND BRUCE WOODBURY DR.
2				
3				
4				
5				
6				
7				
8				
9				
10				
11				

CLARK COUNTY VERTICAL CONTROL v.2003

CLARK COUNTY SURVEYOR'S OFFICE
5051 SOUTH PARADISE ROAD
LAS VEGAS, NEVADA 89119
(702) 455-0640

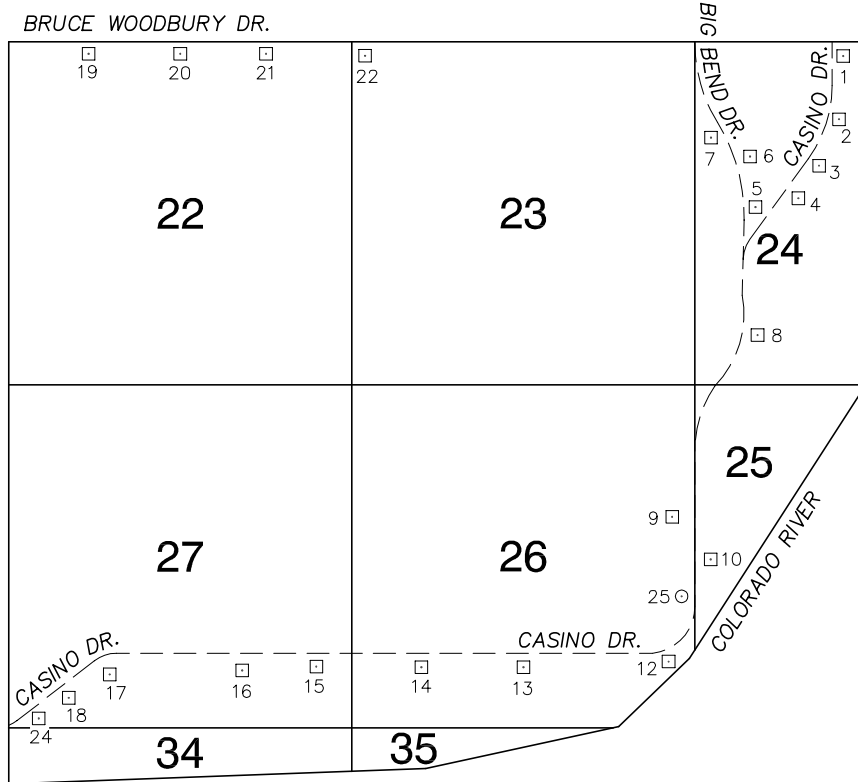
CONVERSION FACTOR:
METERS X $\left(\frac{3937}{1200}\right)$ = U.S. SURVEY FEET

REVISED 2003

SHEET
1 OF 1

32-66
NW

Township 32 South, Range 66 East Southeast Quarter



IN 1992, ELEVATIONS IN THE LAUGHLIN AREA WERE ADJUSTED TO NAVD 1988 FROM NGVD 1929 UTILIZING THE NATIONAL GEODETIC SURVEY'S VERTCON TRANSFORMATION PROGRAM VERSION 1.0. THIS PROGRAM HAS AN ESTIMATED ROOT MEAN SQUARE ERROR OF +/- 1 CM, AND A MAXIMUM ESTIMATED ERROR OF +/- 2.5 CM. THIS 2003 BENCHBOOK INCORPORATES THIS METHODOLOGY.

- ALL ELEVATIONS ARE IN METERS -

No.	STATION	ELEVATION (METERS)	DESCRIPTION
1	2C26 24NE6	159.980	F N D RIVET AND SQUARE ALUMINUM PLATE IN TOP OF CURB, NORTHEAST CORNER OF CASINO DR. AND THE SOUTH ENTRANCE TO THE GOLDEN NUGGET NEAR THE PC OF CASINO DR.
2	2C26 24N6	171.324	F N D RIVET AND SQUARE ALUMINUM PLATE IN TOP OF CURB, NORTHEAST CORNER OF CASINO DR. AND THE MAIN ENTRANCE TO THE RIVER PALMS CASINO NEAR THE PC OF CASINO DR.
3	2C26 24E6	181.717	F N D RIVET AND SQUARE ALUMINUM PLATE IN TOP OF CURB, NORTHEAST CORNER OF CASINO DR. AND THE PARKING GARAGE ENTRANCE OF THE RIVER PALMS CASINO NEAR THE PC CASINO DR.
4	2C26 24C4	193.962	F N D RIVET AND SQUARE ALUMINUM PLATE IN TOP OF CURB, EAST SIDE OF CASINO DR. NEAR THE PC OF A CURVE, 650' NORTH AND EAST OF BIG BEND DR.
5	2C26 24W4	199.043	F N D RIVET AND SQUARE ALUMINUM PLATE IN TOP OF CURB, NORTHEAST CORNER OF CASINO DR. AND BIG BEND DR. NEAR THE PC OF CASINO DR.
6	2C26 24NW6	210.994	F N D RIVET AND SQUARE ALUMINUM PLATE IN TOP OF CURB, EAST SIDE OF BIG BEND DR., 1150' NORTH OF CASINO DR. EAST OF A POWER POLE WITH NO NUMBER.
7	2C26 24NWW6	217.897	F N D REBAR AND PLATE, WEST SIDE OF BIG BEND DR. 0.37 MILES NORTH OF CASINO DR., NORTH OF THE ENTRANCE TO THE POWER COMPANY SPORTS COMPLEX.
8	2C26 24S6	193.420	F N D RIVET AND SQUARE ALUMINUM PLATE IN TOP OF CURB, SOUTHEAST CORNER OF CASINO DR. AND THE SOUTH ENTRANCE TO HARRAH'S CASINO, 0.28 MILES SOUTH AND WEST OF BIG BEND DR.
9	2C26 26E4	203.086	F N D RIVET AND SQUARE ALUMINUM PLATE IN A CONCRETE MONUMENT, WEST SIDE OF CASINO DR., 0.63 MILES SOUTH AND WEST OF BIG BEND DR. JUST SOUTH OF THE NORTH END OF A GUARD RAIL.
10	2C26 25W4	215.003	F N D RIVET AND SQUARE ALUMINUM PLATE IN A CONCRETE VENT PIPE PAD, EAST SIDE OF CASINO DR., 0.84 MILES SOUTH AND WEST OF BIG BEND DR.
11			LOST 2003

CLARK COUNTY VERTICAL CONTROL v.2003

CLARK COUNTY SURVEYOR'S OFFICE
5051 SOUTH PARADISE ROAD
LAS VEGAS, NEVADA 89119
(702) 455-0640

CONVERSION FACTOR:
METERS X $\left(\frac{3937}{1200}\right)$ = U.S. SURVEY FEET

REVISED 2003

SHEET
1 OF 2

32-66
SE

No.	STATION	ELEVATION (METERS)	DESCRIPTION	No.	STATION	ELEVATION (METERS)	DESCRIPTION
12	2C26 26SE6	180.676	FND RIVET AND SQUARE ALUMINUM PLATE IN A CONCRETE MONUMENT, SOUTH SIDE OF A CURVE ON CASINO DR. NEAR A PHONE SPLICE BOX AND A GUARD RAIL, 1.36 MILES SOUTH AND WEST OF BIG BEND DR.	25	OC26 26SEE6 2000	211.950	SHEET RIVET AND ROUND ALUMINUM PLATE IN A CONCRETE MONUMENT, WEST SIDE OF CASINO DR. 0.97 MILES SOUTH AND WEST OF BIG BEND DR. NEAR A GUARD RAIL.
13	2C26 26S6	193.380	FND RIVET AND SQUARE ALUMINUM PLATE IN A CONCRETE VENT PIPE PAD, SOUTH SIDE OF CASINO DR. 1.63 MILES SOUTH AND WEST OF BIG BEND DR.	26			
14	2C26 26SW6	176.010	FND RIVET AND SQUARE ALUMINUM PLATE IN A CONCRETE PAD FOR ELECTRICAL TRANSFORMER #FC535, SOUTH SIDE OF CASINO DR. 1.95 MILES SOUTH AND WEST OF BIG BEND DR.	27			
15	2C26 27SE6	174.977	FND RIVET AND SQUARE ALUMINUM PLATE IN A CONCRETE PAD FOR ELECTRICAL TRANSFORMER #FC527, SOUTH SIDE OF CASINO DR. 2.23 MILES SOUTH AND WEST OF BIG BEND DR.	28			
16	2C26 27S6	173.793	FND RIVET AND SQUARE ALUMINUM PLATE IN A CONCRETE PAD FOR 2 SPRINKLER CONTROL BOXES, SOUTH SIDE OF CASINO DR. 2.41 MILES SOUTH AND WEST OF BIG BEND DR.	29			
17	2C26 27SW6	172.118	FND RIVET AND SQUARE ALUMINUM PLATE IN TOP OF CURB, SOUTH SIDE OF CASINO DR. AT 1175 CASINO DR. (CENTEL BUILDING), 2.41 MILES SOUTH AND WEST OF BIG BEND DR.	30			
18	2C26 27SWW6	168.611	FND RIVET AND SQUARE ALUMINUM PLATE IN A CONCRETE ELECTRICAL TRANSFORMER PAD, WITH NO NUMBER, SOUTH SIDE OF CASINO DR., 2.96 MILES SOUTH AND WEST OF BIG BEND DR.	31			
19	2C26 22NNW6	261.362	FND RIVET AND SQUARE ALUMINUM PLATE IN A CONCRETE MONUMENT, SOUTH OF BRUCE WOODBURY DR., 18' EAST OF CENTERLINE OF GATE IN CHAIN LINK FENCE, 0.77 MILES EAST OF THE NEEDLES HIGHWAY.	32			
20	2C26 22N4	247.987	FND RIVET AND SQUARE ALUMINUM PLATE IN A CONCRETE MONUMENT, SOUTH OF BRUCE WOODBURY DR. AT THE FENCE, 1.20 MILES EAST OF THE NEEDLES HIGHWAY, 10.5 FT. EAST OF: $\frac{1}{4} \frac{S 15}{S 22}$	33			
21	2C26 22NNE6	234.170	FND RIVET AND SQUARE ALUMINUM PLATE IN A CONCRETE MONUMENT, SOUTH OF BRUCE WOODBURY DR. AT THE FENCE, 1.27 MILES EAST OF THE NEEDLES HIGHWAY.	34			
22	2C26 23NWS	220.892	FND RIVET AND SQUARE ALUMINUM PLATE IN A CONCRETE MONUMENT. SOUTH OF BRUCE WOODBURY DR. AT THE FENCE, 1.52 MILES EAST OF THE NEEDLES HIGHWAY, 10 FT. EAST OF: $\frac{S15}{S22} \frac{S14}{S23}$	35			
23			LOST 2003	CLARK COUNTY VERTICAL CONTROL v.2003			
24	2C26 27SSW6	168.552	FND RIVET AND SQUARE ALUMINUM PLATE IN A CONCRETE PAD FOR ELECTRIC TRANSFORMER #DFFC 537, SOUTH SIDE OF CASINO DR. 3.09 MILES SOUTH AND WEST OF BIG BEND DR.	CLARK COUNTY SURVEYOR'S OFFICE 5051 SOUTH PARADISE ROAD LAS VEGAS, NEVADA 89119 (702) 455-0640			CONVERSION FACTOR: METERS X $\left(\frac{3937}{1200}\right)$ = U.S. SURVEY FEET
				REVISED 2003	SHEET 2 OF 2	32-66 SE	

Township 32 South, Range 66 East Southwest Quarter



IN 1992, ELEVATIONS IN THE LAUGHLIN AREA WERE ADJUSTED TO NAVD 1988 FROM NGVD 1929 UTILIZING THE NATIONAL GEODETIC SURVEY'S VERTCON TRANSFORMATION PROGRAM VERSION 1.0. THIS PROGRAM HAS AN ESTIMATED ROOT MEAN SQUARE ERROR OF +/- 1 CM, AND A MAXIMUM ESTIMATED ERROR OF +/- 2.5 CM. THIS 2002 BENCHBOOK INCORPORATES THIS METHODOLOGY.

- ALL ELEVATIONS ARE IN METERS -

No.	STATION	ELEVATION (METERS)	DESCRIPTION
1	2C26 21NNE6	284.832	F N D RIVET AND SQUARE ALUMINUM PLATE IN A CONCRETE MONUMENT, SOUTH OF BRUCE WOODBURY DR. AT THE FENCE, 0.27 MILES EAST OF THE NEEDLES HIGHWAY.
2	2C26 21N6	281.048	F N D RIVET AND SQUARE ALUMINUM PLATE IN A CONCRETE VENT PIPE PAD, EAST SIDE OF THE NEEDLES HIGHWAY. 0.22 MILES NORTH OF LAS PALMAS LN.
3	2C26 21C4	260.249	F N D RIVET AND SQUARE ALUMINUM PLATE IN TOP OF CURB, NORTHEAST CORNER OF THE NEEDLES HIGHWAY AND LAS PALMAS LN.
4	2C26 21S6	242.713	F N D RIVET AND SQUARE ALUMINUM PLATE IN A CONCRETE ELECTRICAL TRANSFORMER PAD #FC504, NORTHEAST CORNER OF THE NEEDLES HIGHWAY AND PALM TERRACE.
5	2C26 21S4	223.285	F N D RIVET AND SQUARE ALUMINUM PLATE IN TOP OF CURB, NORTHEAST CORNER OF THE NEEDLES HIGHWAY AND RIO VISTA DR.
6	2C26 28NE6	201.801	F N D RIVET AND SQUARE ALUMINUM PLATE IN TOP OF CURB, NORTHEAST CORNER OF THE NEEDLES HIGHWAY AND CAL EDISON DR. NEAR THE PC.
7			LOST 2003
8	2C26 28C4	185.461	F N D RIVET AND SQUARE ALUMINUM PLATE IN TOP OF CURB, NORTHWEST CORNER OF THE NEEDLES HIGHWAY AND THE ENTRANCE INTO CROWN POINT APARTMENTS.
9			LOST 2003
10			LOST 2003
11			LOST 2003

CLARK COUNTY VERTICAL CONTROL v.2003

CLARK COUNTY SURVEYOR'S OFFICE
5051 SOUTH PARADISE ROAD
LAS VEGAS, NEVADA 89119
(702) 455-0640

CONVERSION FACTOR:
METERS X $\left(\frac{3937}{1200}\right)$ = U.S. SURVEY FEET

REVISED
02/14/2005

SHEET
1 OF 2

32-66
SW

No.	STATION	ELEVATION (METERS)	DESCRIPTION	No.	STATION	ELEVATION (METERS)	DESCRIPTION
12			LOST 2003	25			
13			LOST 2003	26			
14	2C26 33NNW6	157.158	F N D RIVET AND SQUARE ALUMINUM PLATE IN TOP OF CURB, SOUTH SIDE OF CASINO DR. BY THE WEST FIRE HYDRANT AT 1955 CASINO DR., 3.75 MILES SOUTH AND WEST OF BIG BEND DR.	27			
15	2C26 28S4	157.428	F N D RIVET AND SQUARE ALUMINUM PLATE IN A CONCRETE SEWER MANHOLE PAD, NORTH OF AND ACROSS THE ROAD FROM 1685 CASINO DR., 3.42 MILES SOUTH AND WEST OF BIG BEND DR.	28			
16	0C26 28SWW6 2000	171.544	S E T RIVET AND ROUND ALUMINUM PLATE IN TOP OF CURB, NORTHWEST CORNER OF NEEDLES HWY. AND CASINO DR. NEAR THE PC OF NEEDLES HWY.	29			
17	0C26 28SW6 2000	172.427	S E T RIVET AND ROUND ALUMINUM PLATE IN TOP OF CURB, NORTHWEST CORNER OF NEEDLES HWY. AND LAUGHLIN BLVD. NEAR THE PC OF NEEDLES HWY.	30			
18	0C26 28W6 2000	177.706	S E T RIVET AND ROUND ALUMINUM PLATE IN TOP OF CURB, NORTHWEST CORNER OF NEEDLES HWY. AND SOUTHPOINT CIR. NEAR THE PC OF NEEDLES HWY.	31			
19	0C26 28E6 2000	194.248	S E T RIVET AND ROUND ALUMINUM PLATE IN TOP OF CURB, NORTHEAST CORNER OF NEEDLES HWY. AND BAY SANDS DR. NEAR THE PC OF NEEDLES HWY.	32			
20	0C26 28SSW6 2000	160.170	S E T RIVET AND ROUND ALUMINUM PLATE IN CENTER OF CONCRETE HEADWALL, SOUTH SIDE OF CASINO DR., 4 MILES SOUTH AND WEST OF BIG BEND DR.	33			
21	0C26 29SES 2000	162.101	S E T RIVET AND ROUND ALUMINUM PLATE IN NORTHEAST CORNER OF CONCRETE PAD FOR SOUTHWEST GAS VAULT, SOUTH SIDE OF NEEDLES HWY., 0.18 MILES WEST OF CASINO DR.	34			
22				35			
23				CLARK COUNTY VERTICAL CONTROL v.2003			
24				CLARK COUNTY SURVEYOR'S OFFICE 5051 SOUTH PARADISE ROAD LAS VEGAS, NEVADA 89119 (702) 455-0640		CONVERSION FACTOR: METERS X $\left(\frac{3937}{1200}\right)$ = U.S. SURVEY FEET	
				REVISED 2003	SHEET 2 OF 2	32-66 SW	